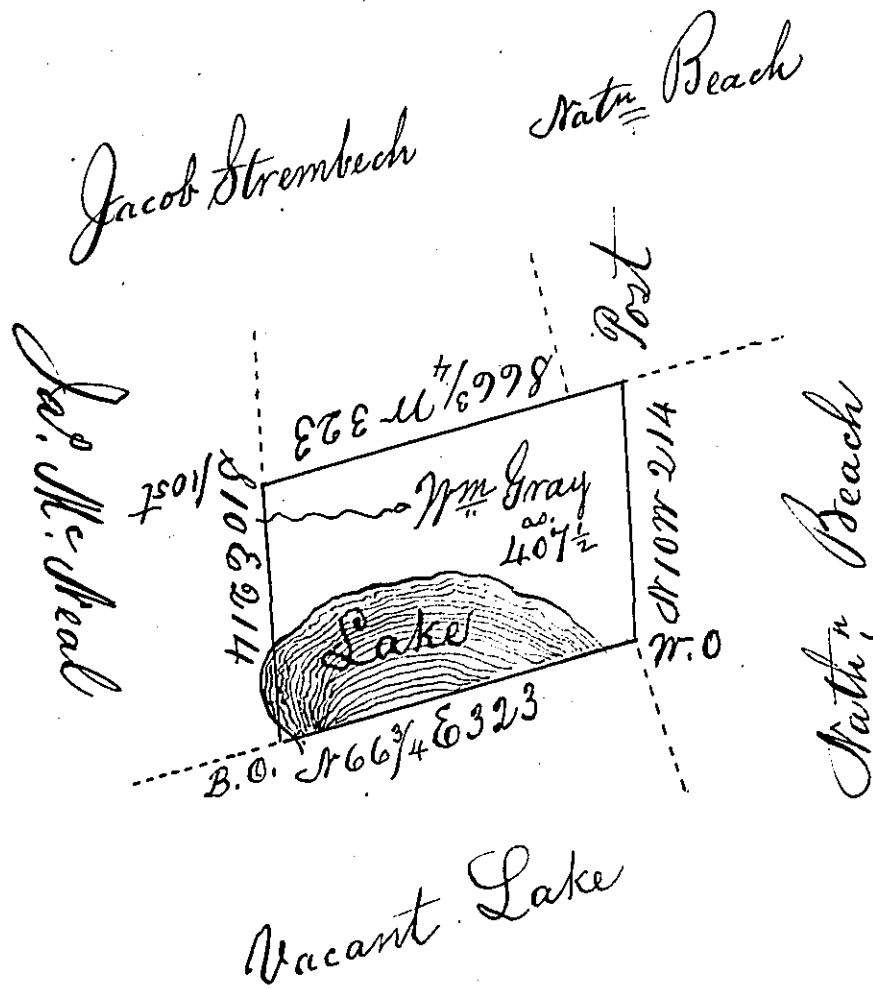


(see A-67-107)



A Draft of a tract of land called Situate in Luzerne
 County, containing four hundred & seven acres $\frac{1}{2}$ & allowce
 Surveyed for Wm Gray the 12th day of August 1794,
 by virtue of a warrant dated the 6th day of August
 1793.

Daniel Brodhead Esqr } by Wm Gray D. S.
 Surveyor Genl. }

IN TESTIMONY that the above is a copy of the original remaining on file in the
 Department of Internal Affairs of Pennsylvania, made con-
 formably to an Act of Assembly approved the 16th day of
 February, 1833, I have hereunto set my Hand and caused
 the Seal of said Department to be affixed at Harrisburg, this

Twenty Third day of May 1834.
 J. Simpson Africa,
 Secretary of Internal Affairs.